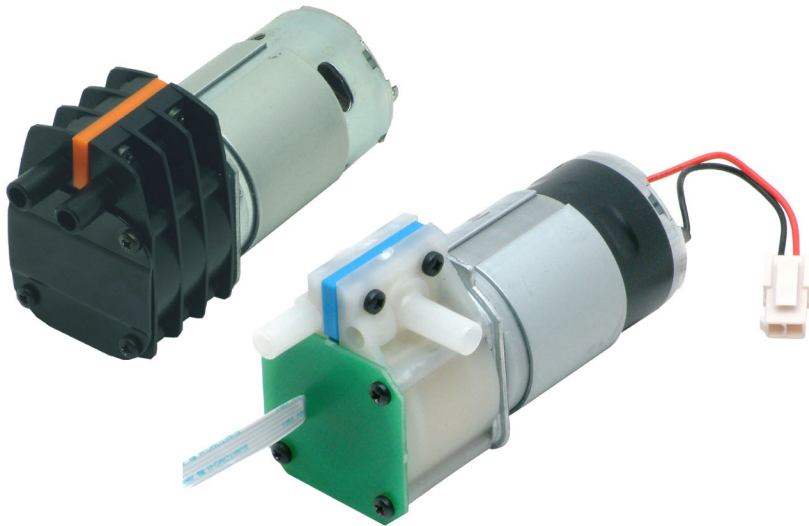


Oil-Free

## Rotary Diaphragm Liquid Pump

# RD1



Max Flow
0.85 l/min
Max Vacuum
7m lift
Max Pressure
2m head

### Revolutionary Pumping Principle

This patented technology has a revolutionary pumping principle. The flow of the liquid is initiated by an eccentric mounted bearing on a drive shaft, which revolves within a flexible diaphragm. As the shaft rotates, the bearing flexes the diaphragm squeezing liquid through the pump. Self priming up to 7 metres the RD1 out performs most diaphragm and peristaltic pumps.

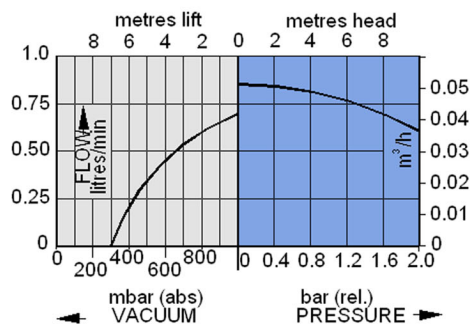
### Reliability and long life

Designed for use in compact installations the RD1 offers over 2000 hours of service from a low cost unit. The unique design means the liquid comes into contact with only two parts being the diaphragm and pump body which are available in food grade materials and are capable of pumping hot liquids. The pump has no sliding parts so wear and maintenance is kept to a minimum

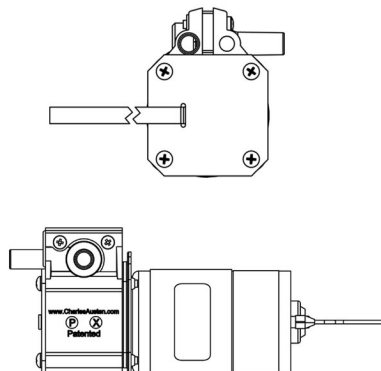
### Application ideas

Application ideas include water sampling, water circulation, vending, hydroponics, condensate removal and dosing.

RD1



## Dosing Option



### Dosing Option

The RD1 accurately pumps the same volume of liquid each revolution proving ideal for dosing. A Hall Effect Sensor is used to sense the number of revolutions the pump makes when it is running. Using a combined revolution counter, and controller, the pump can be set to run for a predetermined number of revolutions. This allows the operator to accurately dose specific volumes of liquid, time and again.



Technical Specifications

RD1

Motor Type:

DC Permanent magnet.

model no.	12V DC		
	operating current	max. load	fuse rating
RD5	0.8A	1.2A	2.0A

Performance:

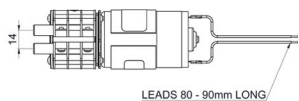
model no.	flow at zero head l/min	nominal max. head metres	max. lift (dry) metres
RD1	0.85	2.0	7.0

Connectors:

Integral, plain polypropylene 8.0mm OD  
Optional: plain nylon or noryl 8.0mm OD

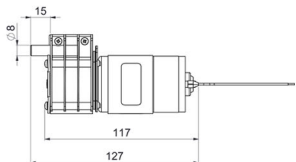
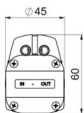
RD1 0.55kg

dimensions: mm

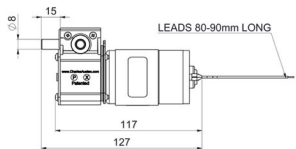
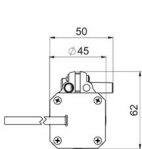
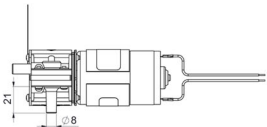


Pump Material Option:

component	standard	options
Diaphragm	Santoprene	-
Body	Polypropylene	Nylon, Noryl



RD1 Dosing Option 0.55kg



Please note that it is important that you ensure the motor specification stated and the range of materials offered in the pump are compatible with the performance, environmental limitations and chemical resistance of the application.

For further information or details of our extensive range of diaphragm pumps, contact our technical sales office who will be pleased to help you select the most suitable pump for your application. S30-151/2

distributed by: