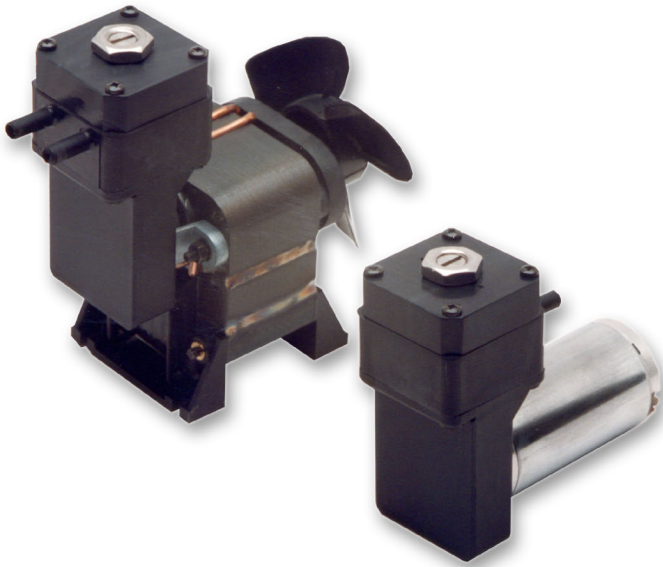


Oil-Free

Liquid Diaphragm Pump

LD2



Max Flow
1.6 l/min
Max Lift (dry)
5.0 m
Max Head
20m H ₂ O

Contamination free pumping

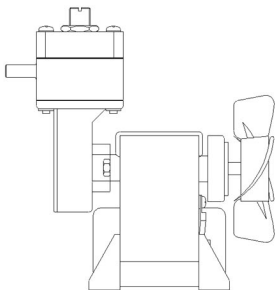
The LD2 is a self priming pump for use with either liquids, vapours, gases or associated mixtures. Suitable for continuous duty the LD2 is ideal for a wide range of industries, especially where systems can run dry.

Adaptability and long life

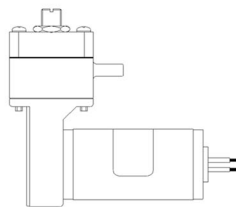
Suitable for OEM applications where reliability is essential. Featuring high quality components the LD2 includes sealed for life bearings and an innovative valve design. The performance can be customised to suit each client's individual requirements.

Easy pressure control

Incorporated within the head assembly of the LD2 is a fully adjustable by-pass valve. This allows the user full control over the output of the pump and acts as a useful safety feature, protecting both the pump and externally connected equipment from pressure damage.

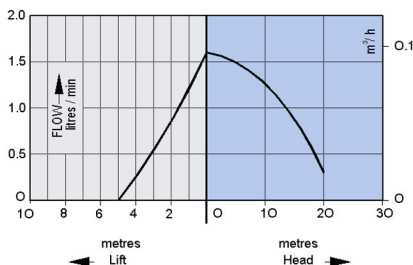


LD2 single ended pump
OEM model for AC
power supply

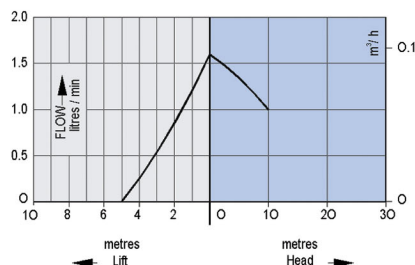


LD2 single ended pump
OEM model for DC
power supply

LD2 AC



LD2 DC



Corrosion resistant options

The LD2 can be upgraded with a range of optional material components providing resistance to a wide range of corrosive liquids or gases.

Application ideas

Application ideas include liquid dispensing, solar heating circulation, condensate removal and sample transfer



Technical Specifications

LD2

Motor Type:

AC Skeleton frame, shaded pole with shielded ball races throughout.
2800 RPM. Thermal Protection 125 C

DC Permanent magnet.

model no.	110/115V 50/60Hz (12V DC)			230V 50Hz (24V DC)		
	operating current	max. load	fuse rating	operating current	max. load	fuse rating
LD2 (AC Supply)	0.8A	0.9A	2.0A	0.45A	0.5A	1.0A
LD2 (DC Supply)	1.0A	1.5A	3.0A	0.5A	0.8A	2.0A

Performance:

model no.	flow at zero head l/min	nominal max. head metres	max. lift (dry) metres
LD2 (AC Supply)	1.6	20.0*	5.0
LD2 (DC Supply)	1.6	20.0*	5.0

* recommended maximum working pressure

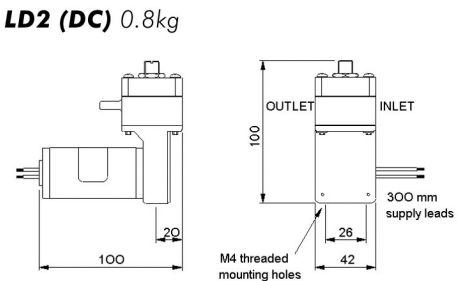
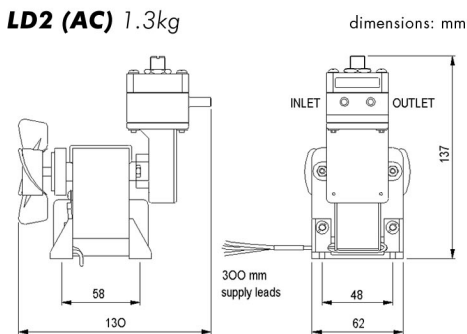
Pump Material Option:

With the choice of Viton, PTFE and Chemraz flexibles, the pump will handle a variety of corrosive liquids and vapours.

component	standard	options
Head with integral connectors	Nylon	Polypropylene, PTFE
Diaphragm	EPDM	Viton, PTFE
Valves	Nitrile	Viton, Chemraz
Plates & Screws	Stainless Steel	n/a
Valve Pins & Valve Stops	Stainless Steel	n/a
Head Gasket	Viton	PTFE

Connectors:

Integral, plain 6.0mm OD
Optional: Polypropylene 6mm OD



Please note that it is important that you ensure the motor specification stated and the range of materials offered in the pump are compatible with the performance, environmental limitations and chemical resistance of the application.

For further information or details of our extensive range of diaphragm pumps, contact our technical sales office who will be pleased to help you select the most suitable pump for your application. S30-224/1

distributed by: