



Oil-Free / Dry

## PTFE Diaphragm Vacuum Pump



Innovac 40

Innovac 20

# Innovac

Max Flow
38 l/min & 20l/min
Max Vacuum
8.0 mbar abs
Max Pressure
n/a

### Contamination free vacuum

Two models Innovac 20 and 40 are the first in a new family of dry vacuum pumps designed for use with corrosive gases and vapours. The oil free design of the pump both eliminates the risk of process contamination and the difficulty in disposing of waste lubricants found in other pump types.

### Fully corrosion resistant

The construction materials ensure that the Innovac is fully chemical resistant to virtually all gases and solvent vapours. PTFE, Kalrez and PVDF are used for all wetted components, being the most chemically inert materials available.

### Reliability and long life

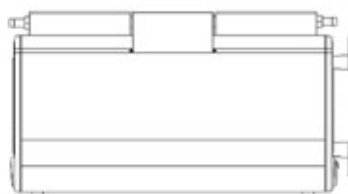
Answering to the needs of the real-life laboratory user Innovac offers class-leading performance levels with sleek ergonomic design. At the heart of the Innovac is a unique "composite bond" diaphragm system which is the secret to its extended life and remarkably low cost of ownership.

### Exceptional laboratory pump

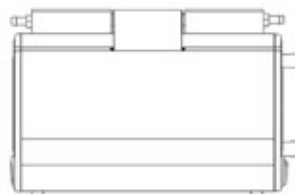
Clever features abound to make the users life easier. Innovac features a tough alloy case with unique "T-Slot" rails for quick easy mounting of necessary attachments such as vapour traps or condensers. The flush-folding carry handle provides stowage for the pump service tool and conceals a handy hour meter, which can monitor process times.

### Application ideas

Application ideas include laboratory bench top use for filtration, rotary evaporation and gel drying.

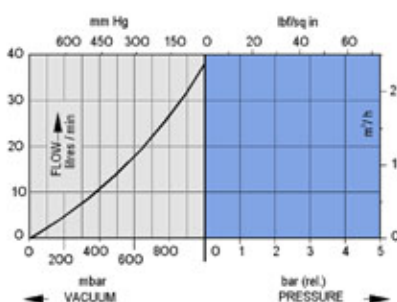


Innovac 40 double ended pump

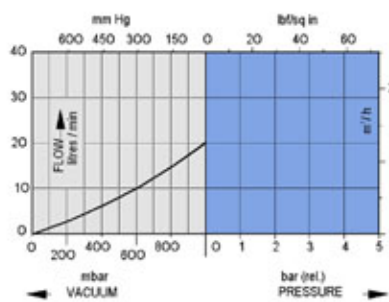


Innovac 20 double ended pump

### Innovac 40



### Innovac 20



# Innovac

## Motor Type:

Permanent Capacitor with shielded ball race bearings throughout, enclosed fan. 1400 RPM @ 50Hz

Thermal Protection 140°C

Maximum ambient temperature 40°C

model no.	110/115V 50/60Hz			230V 50Hz		
	operating current	max. load	fuse rating	operating current	max. load	fuse rating
Innovac 20	1.8A	1.8A	3.0A	0.6A	0.6A	2.0A
Innovac 40	2.0A	2.0A	5.0A	1.0A	1.0A	3.0A

## Performance:

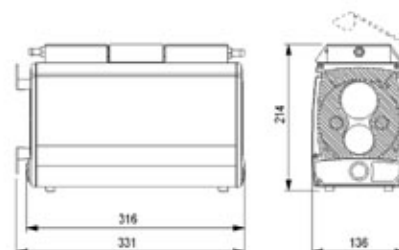
model no.	max. free flow l/min	max. vacuum mbar (abs)
Innovac 20	20.0	8.0
Innovac 40	38.0	8.0

## Connectors:

Horizontal, barbed, 8.0mm OD PVDF

## Innovac 20 8.5kg

dimensions: mm

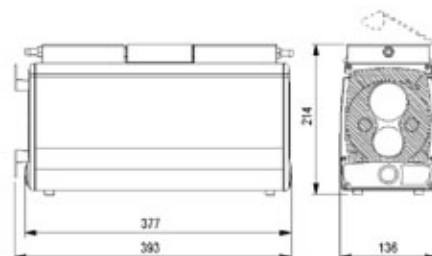


## Pump Materials:

Pump components are specified to give maximum corrosion resistance.

## Innovac 40 11.6kg

component	standard
Head	PTFE
Diaphragm	PTFE
Valves	Kalrez
O-Rings	PTFE
Connectors / Tubing	PVDF

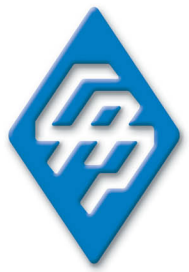


distributed by:

Please note that it is important that you ensure the motor specification stated and the range of materials offered in the pump are compatible with the performance, environmental limitations and chemical resistance of the application.

For further information or details of our extensive range of diaphragm pumps, contact our technical sales office who will be pleased to help you select the most suitable pump for your application.

S30-230/1



Oil-Free / Dry

## PTFE Diaphragm Vacuum Pump



# Innovac 60

Max Flow
60.0 l/min
Max Vacuum
12 mbar
Max Pressure
n/a

### Motor Type

Permanent Capacitor with shielded ball race bearings throughout, enclosed fan. 1400 RPM @ 50Hz.

Thermal Protection 140°C

Maximum ambient temperature 40°C

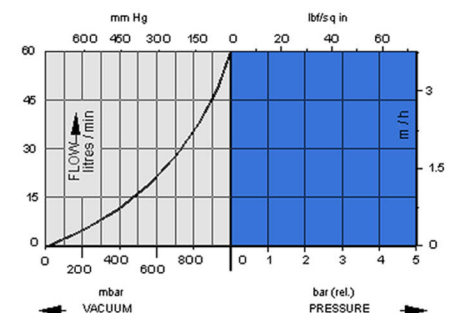
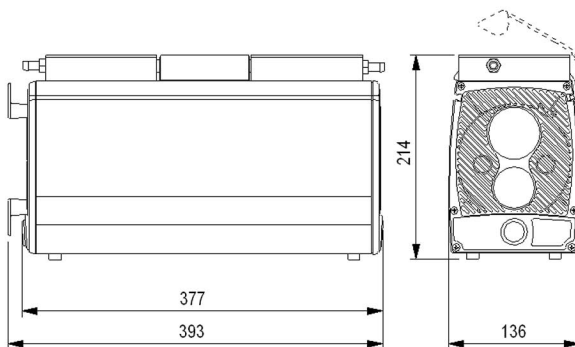
### Performance

Model no.	Max free flow l/min	Max vacuum mbar	Max pressure bar
Innovac 60	60.0	12.0	n/a

### Technical Drawing

**Innovac 60** 12.0 Kg

dimensions: mm



### Pump Materials

component	material
head & diaphragm	PTFE
valves	Kalrez
connectors and tubing	PVDF

### Application ideas

Application ideas include laboratory benchtop use for filtration, rotary evaporation and gel drying. The Innovac 60 is ideal for installation into the benchtop serving several processes from one pump.

Please note - it is important that you ensure the motor specification stated and the range of materials offered in the pump are compatible with the performance, environmental limitations and chemical resistance requirements of the application.

For further information or details of our extensive range of pumps, contact our technical sales office who will be please to help you select the most suitable pump for your application.

S30-245/1

